



## CHAIRMAN'S REPORT 2021-22



VIEW OF CUCKFIELD FROM ANSTY, BRAD WILLIAMS, 2022

Andy Burton  
Chairman, 2021-22  
Cuckfield Parish Council

## **Introduction – Chairman Andy Burton**

Welcome to the Parish Council's review of 2021-22. Whilst the pandemic hasn't gone away, it's a relief to be able to resume some normality to community life and events in the village. This includes our first Village Roadshow, originally planned for 2020 and incorporating our first Annual Parish Meeting since 2019. We welcome Mims Davies MP as our guest, together with members of various local organisations who have made such a contribution to our community, especially over the past couple of years. It's these groups that make Cuckfield such a special place to live and work.

Despite further lockdowns and restrictions, the Parish Council has continued to be flexible in delivering its Business Plan as we enter the final year before the elections in May 2023 (see [www.cuckfield.gov.uk/administration/business-plan](http://www.cuckfield.gov.uk/administration/business-plan)). I am pleased to report that much of the Plan that we set out in 2019 has been completed, with other activities and projects on-going. Of particular note, this year has seen the distribution of food parcels for Cuckfield families in need at Easter, summer and Christmas holidays, consultation on ideas for further traffic calming, continuing development of the Angela Fox Nature Garden behind the Queen's Hall, increased recycling facilities, and plans to help promote the village economy and events. The Christmas Street Festival was our biggest ever, and our thanks go to Frances Laing, who has recently retired as a Councillor, for organising the event in recent years. I look forward to celebrating the Queen's Platinum Jubilee in the next few months with the street party on Friday 3<sup>rd</sup> June. We are also planning a Jubilee plaque for the front of the Queen's Hall, and a new metal Jubilee bench for the village centre, to remember this monumental occasion.

As the first tier of local government, our primary focus remains to serve the interests of the Cuckfield area and community and, as ever, we are keen to receive feedback on anything the council does. See [www.cuckfield.gov.uk](http://www.cuckfield.gov.uk) for contact details.

Of course, the biggest threat to our community concerns Mid Sussex District Council's recent plans to allocate 'Cuck-stye', a settlement of 1,600 new houses. By doubling its size, Cuckfield will effectively become a congested town, a short distance from Bolnore where the developer's paint has only just dried on 1,200 houses, and a mile from the newly commenced 'Northern Arc' where at 3,500 new houses one of the country's biggest ever developments is being created – so big it's being managed by the Government. Nobody can say that Mid Sussex isn't already doing its bit (and Cuckfield's Neighbourhood Plan allocates sites not yet developed), but the Westminster algorithm and cries of "more" by developers with political connections and deep pockets have doubled MSDC targets in recent years, which means locations once presumed sacrosanct are now up for grabs. Both Cuckfield and Ansty & Staplefield Parish Councils have resolved to fight the ludicrous proposal and will be supporting the Stop Cuckstye Action Group (SCAG) over the coming weeks and months as it quickly builds momentum. Don't be fooled by MSDC's much publicised "pause" – their work is continuing in the background and if the Government doesn't change its housing strategy, the plans will be rapidly reinstated. I'd urge everyone to keep up to date with events and the SCAG website as it develops ([www.saynotocuckstye.co.uk](http://www.saynotocuckstye.co.uk)). Thank you for your support.

## **2021-22 Council Highlights**

This year our activity highlights include:

- Organising food hampers three times in the year for approx. 40 families in the village most in need. We worked with the Holy Trinity Primary School, Baptist Church and Medical Practice for their distribution. As the cost-of-living increases accelerate, we will be looking further at this in the coming year.

- Managing our Queen's Hall and Village Hall during lockdowns, ensuring they have been Covid secure when we have been able to open them, and liaising with hirers as we return to normal.
- Opening the Post Office in the Queens Hall. Regrettably, their staff shortages have meant this was short lived and it is currently closed.
- Applying for numerous grants for our projects, and to help mitigate losses caused by Covid. This has meant we have been able to balance the budget this year, and keep precept increases to a minimum.
- Keeping abreast of developments with MSDC's progress on locations for new District Plan housing allocations (not just Cuck-stye – the site at Hanlye Lane is currently at Examination for an additional 80 new houses). We remain committed to preserving the village distinctiveness through implementation of our Neighbourhood Plan policies in the face of extreme pressure from developers who see Cuckfield as prime real estate.
- Reviewing traffic calming options and feedback as part of a wider study with our traffic consultant.
- Organising village events, such as the Christmas Street Festival, Cuckfield Escape Game treasure hunt, two Skate Jam days and the Silver Sunday Cheese and Wine event. Look out for the Platinum Jubilee Street Party on Friday 3<sup>rd</sup> June, the Nuclear Bunker open days on 22<sup>nd</sup> May and 5<sup>th</sup> June and another Rain or Shine theatre company production on 5<sup>th</sup> August.
- Naming the twittens and lanes which did not already have one, and installing new signs.
- Developing the Angela Fox Nature Garden, at the rear of the Queen's Hall. This now has new paths, lawns and planting which will allow its use as a new community open space.
- Planting the new Horsefield Green community orchard, with mixed apple, plum and cherry trees. Our thanks to ISOC and Cucksoc for their support with this, as well as local residents who came out to assist with the planting.
- Developing a new "What's on Cuckfield" on-line tool and calendar for promotion of events.
- As reported last year, we are still frustrated that after several years, Taylor Wimpey is unresponsive in completing the necessary work which will enable us to take over the Buttinghill open space, with Mid Sussex District Council seemingly still unable to hold them to account.
- We welcomed Kate Ely to the parish office team as our new Assistant Clerk. Kate has already made a welcome and positive impact to the team, and we look forward to working with her over the coming years.

Additional details can be found in the committee activities below.

The above successes would not be possible without the great work undertaken by the Parish Council team, led by our Clerk, Sam Heynes.

## **COMMITTEE ACTIVITIES**

In 2021-22 the Parish Council ran committees for Assets, Community & Environment, Community Buildings, Finance & General Purposes, Planning and Roads and Traffic. Reports on their activities are outlined below.

### **Assets, Community and Environment Committee – Cllr Andrew Symonds**

The ACE subcommittee of the Parish Council sounds as if it is the best! That may be true, but it actually stands for three important elements of the service provided to the Cuckfield community by the Parish Council: Assets, Community and Environment.

In spite of the restrictions imposed by Covid, this has been an active and busy year.

#### **Assets**

This includes the Cemetery, the toilets in the Broad Street car park, the Skate Park and the two allotments sites.

The cemetery was subject to a wilding experience last year which did not prove to be wholly acceptable to some, although we did see some wonderful ox-eye daisies and lotus corniculatus filling the grounds. Due to a major equipment failure and the impact of Covid, additional effort was required to restore the cemetery to its normal attractive state. In future a single section has been identified which will be allowed to grow wild each year, with the majority of the grounds being well maintained and manicured.

We also arranged to have the lettering on the War Memorial repainted after cleaning it the year before caused the lettering to fade.



FIGURE 1 LOTUS CORNICULATUS AT THE CEMETERY, HOLY TRINITY CHURCH, JOHN DICKIE 2021





FIGURE 2 OX-EYE DAISIES AT THE CEMETERY, HOLY TRINITY CHURCH, SAM HEYNES 2021

The toilets in Broad Street car park have been subject to some minor incidents of vandalism. Thanks to a successful grant application to Sussex Police Crime Commission, external CCTV will be installed in April 2022 in what will hopefully be a preventative measure.

The Skate Park has been the focus of two very successful skate jam days with training and mentoring being offered. This event has proved to be hugely popular and the Parish Council will look to arrange more of these days in the future.



FIGURE 3 CUCKFIELD'S SKATE JAM, PAUL CECCHERINI 2022

The allotments at Courtmead Road and Whitemans Green have been well utilised by 73 total tenants across both sites. After some investigation the Parish Council offered an option to the allotment holders at Whitemans Green to create an Allotment Association to enable them to have a bigger say in the management of the site, but as the majority wished the status quo to remain this proposal has been shelved.

## **Community**

The following initiatives were organised during the past year.

The Silver Sunday afternoon tea for 'senior' members of the village took place at the Queen's Hall. They were entertained with live music from Made in the Shade and offered wine and cheese and other refreshments. The next Silver Sunday is planned for 24<sup>th</sup> April 2022 at the Queens Hall, so please do come along to this free event. Check the Parish Council website for further details or contact [jane.forester@cuckfield.gov.uk](mailto:jane.forester@cuckfield.gov.uk) or telephone 01444 454276 to let us know you will be attending.



FIGURE 4 MADE IN THE SHADE PERFORMING AT SILVER SUNDAY, SAM HEYNES 2021

The Parish Council organised food hampers to be distributed to nearly 40 families in need throughout the village, with thanks to Holy Trinity Primary School and the Medical Centre. Deliveries were made at Easter, the start of the summer holidays and for Christmas thanks to contributions from the Baptist Church and Sussex Community Foundation. These were received with surprise and delight by those struggling through the Covid period. This initiative will be reviewed in the current year.

Both the Christmas Scarecrow Competition and Christmas Street Festival were back this year, and we were delighted to see such wonderful scarecrows from residents and an excellent turnout at the Street Festival which continues to go from strength to strength. Special thanks go to retired Councillor Frances Laing for all the efforts she has contributed to running these very popular events, which will both be back again later this year.





FIGURE 5 CHRISTMAS SCARECROW COMPETITION, MARTIN SHELDON 2021

### ***Environment***

This has largely been a tree story. The extensive ash die back has hit a number of trees for which the Parish Council is responsible. Most noticeable felling perhaps at Horsefield Green where replacement trees have already been planted around the pond, as well as an orchard of fruit trees and bushes planted further down the open space and alongside the road for the enjoyment of the public. Have a look on your next walk around the village! More trees will be planted here within the next year as part of the Queen's Green Canopy initiative to celebrate the Platinum Jubilee.

### **Community Buildings Committee – Cllr Andrea King**

After the recent problems affecting us all it is a great relief to be able to say that things are getting back to normal in Cuckfield with weddings, children's parties, quizzes and other social events happening more and more, in addition to the regular classes. Both halls are very busy, which is pleasing.

Cuckfield Pre-School has continued to use the Village Hall for most of the year and the plans for the long-term improvement of the building are still being considered, albeit for some time in the future. The Parish Council continues to liaise with the Pre-School and have now acquired a small triangle of land to improve access and we heard recently that planning permission has been granted by MSDC for a parking layby for three cars to enable staff to park within the hall curtilage whilst still ensuring the safety of the children with new fencing. We will now have to go to tender and discuss funding so it will not happen immediately.

The Bookfest returned in October and was very well supported. Cuckfield Museum is housed in the Queen's Hall and after restricted opening it will be back to the usual four mornings a week from mid-April. Sadly, despite our best efforts, re-opening the Post Office in the hall has failed as the Postmaster is unable to find staff to cover the two mornings that we hoped to establish. This is very disappointing for all and a great blow for the village.



FIGURE 6 NEW STAGE CURTAINS AT THE QUEEN'S HALL, CUCKFIELD, SAM HEYNES 2021

If you've been into the Queen's Hall recently you will have seen our new stage curtains, which we are all delighted with! The new colour works very well with the recently re-decorated hall, and we've received a lot of positive feedback from hirers.

New licensing rules are now in place for the Angela Fox Nature Garden and work continues to turn it into a pleasant, safe environment for people to use and enjoy. The lawn is doing well and wildflowers and trees are establishing themselves. It proved a wonderful venue for the Outdoor Escape Game treasure hunt we organised in March - a far cry from the muddy area that it was a couple of years ago! It will be some time before it is fully finished but eventually we hope to be able to use it for various outdoor events and the ever popular Rain or Shine Theatre summer performances. Their Christmas play saw us dashing 'Around the World in 80 Days' and was the usual hilarious show.





FIGURE 7 ESPALIERS TREES BEING PLANTED AT THE ANGELA FOX NATURE GARDEN, SAM HEYNES 2022

The final improvement to the garden at the Queen's Hall this year was to replace the rotting and loose decking area. Opting for composite decking as this will last much longer and require less maintenance, we are very pleased with the result.



FIGURE 8 NEW COMPOSITE DECKING AT THE QUEEN'S HALL, SAM HEYNES 2022

Finally, we have imminent plans to convert a storage area on the side of the Queen's Hall into additional toilet facilities which will be directly accessible from the garden, using in part S106 funds from MSDC.

## **Planning Committee – Cllr Steve Oversby-Powell**

The Planning Committee meets more often throughout the year than any other committee (approximately every 3 weeks), which is necessary due to Local Planning Authority deadlines. We are a statutory consultee to all applications in the parish. In the 2021-22 period we reviewed on average 7 cases per meeting.

The vast majority of applications that we reviewed were home improvement projects and as people have emerged from various lockdowns it has become clear that lots of people have been considering how they can make their homes more suited to their changing lives. Many applications have been submitted with the intention of the applicants working more from home, and the council sees the benefit of this on a whole host of levels (less commuting, more family time etc).

As in previous years the committee felt that the majority of applications were perfectly grounded. Often if we have a minor concern about an application, rather than object, we will offer a suggestion to Mid Sussex Planning Department about how an application might be improved. Indeed, our submissions will often start with the words “If MSDC is minded to approve this application they might consider...”. We have found this approach to be effective, and considerate applicants often take on-board these comments prior to the determination deadline, which can help the progression of their case.

We are also concerned with the preservation of trees and had 26 applications in the year to either fell, or structurally prune major trees (or groups of trees) in the village. In any case where a mature tree is to be felled, we ask that compelling evidence is given for why this is necessary.

### ***SHELAA and Cuck-stye***

Aside, from the small-scale applications noted above we provide input to Mid Sussex in relation to their ‘Strategic Housing and Economic Land Availability Assessment’ (SHELAA). This is the process that all district councils around the country use to identify sufficient land to meet five-year (and beyond) requirements for housing as dictated by central government.

Mid Sussex have previously consulted on adding the Hanlye Lane site for 80 houses to its allocation, and we are awaiting the outcome of the recent Inspector’s Examination report on whether this will remain.

In January of this year, Mid Sussex District Council also announced that a consultation on a further update of its SHELAA was to commence in February 2022. This gave us visibility on a host of completely new sites that had been put forwards across the district. Alarming for many in Cuckfield (and Ansty) a proposal had been put forward by Fairfax homes for 1,600 houses South of Cuckfield and East of Ansty.

1,600 is a big number, so let’s put that into context... according to the 2011 census Cuckfield had 1,439 dwellings! There have been a lot of new homes built in Cuckfield in the past 10 years, but this is still the same as parking Cuckfield next to....well, Cuckfield.

Cuckfield as a dwelling has evolved gradually over 900 years, and the potential effect of suddenly dumping 1,600 homes in the gap between Cuckfield and Ansty has not been lost on the Planning Committee (nor for that matter on our colleagues from Ansty and Staplefield

Parish Council). As a Council we have resolved to provide funding to support opposition to this proposal.

In last year's report I observed that one of our key considerations when looking at any planning application is whether an application helps to maintain or could potentially detract from the distinctive character of the village. Our view of this proposal is that it would cause irreparable damage on many levels, and in particular result in the urbanisation of the entire southern aspect of the village (not to mention the loss of the iconic rural views from the church unchanged since Medieval times).

Fairfax (the developer), bizarrely expect us to believe that this can be mitigated by 'building a country park', on land that is currently... open countryside? We aren't convinced and are fairly sure the developers have ulterior motives for including this, perhaps related to landfill created by so many houses.

As with most large-scale planning developments there are bigger forces at play here than Mid Sussex District Council. On a national level there is pressure on government to build more homes, and whilst it sounds interesting to politicians use phrases such as 'levelling-up' (i.e. directing more funds and development to poorer parts of the country) it takes more than good intentions on the part of politicians to get houses built. Developers for their part are businesses, interested mainly in those areas of the country where they can make the greatest returns on their investment, and that unfortunately for us, is here in the southeast.

Government has an important part to play in curtailing excessive development, but this only works if they can see past their noses in Whitehall. Ultimately it comes down to votes...

Some relief may come however from an unlikely source; shortly after Mid Sussex District Council announced their updated Strategic Land Consultation (SHELAA) the Office for National Statistics announced that they were revising their assessment of housing needs for England from 6m to 3m new homes. A number so wildly different that one might argue that perhaps they 'got it wrong' in the first place. Based on this, and other impending policy



consultations, MSDC decided to 'pause' work on the District Plan review until national policy outcomes were known policy consultations.

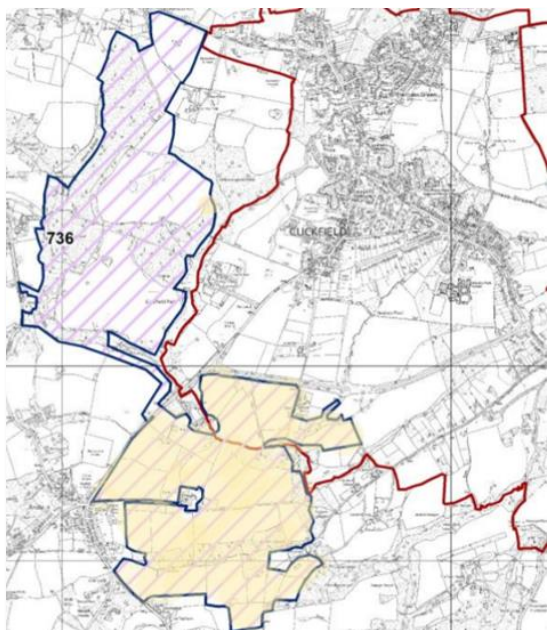


FIGURE 9 EXCERPT FROM MSDC SHELAA, SHOWING 'CUCK-STYE' DEVELOPMENT AREA (HATCHED AREA IN YELLOW DENOTES PLANNED HOUSING AREA, THE HATCHED AREA TO THE NORTH THE 'COUNTRY PARK').

### ***Burgess Hill Northern Arc***

Last year we commented that this development was so large that it would most likely reduce the pressure on surrounding areas to accept major developments. This, it would appear, was incorrect.

### ***Penland Farm***

This development by Redrow Homes of 210 properties on the north-western boundary of Haywards Heath continues and the first phase is now complete. We objected to this development on numerous grounds not least because it erodes the gap between Haywards Heath and Cuckfield. The development also gave us all in the village a small insight into the sort of disruption that would be become an everyday occurrence for years if the homes proposed to the south of the village are built.

We noted in our last report that with any large development it is essential that MSDC insist that crucial infrastructure works (i.e. roads and roundabouts) are constructed as a condition of planning prior to the houses being built – not as an afterthought which then causes what would have been avoidable disruption to thousands of people for months on end.

### ***Planning Enforcement and Issues***

- Denning Place. The Appeal Permission for the Denning Place development on Broad Street was granted on the condition that views of the countryside would be maintained as stated by the applicant. The applicant then blocked those views they had agreed would be maintained and further contravened planning rules by building outside of the agreed development boundary. Whilst the entrance gates have recently been reduced in height, we continue to press MSDC in relation to this.
- The Buttinghill drainage pond is still in a state of collapse, and Taylor Wimpey appear to be doing the absolute minimum required to avoid enforcement. CPC cannot take this land

over formally as intended public open space until this is resolved. Discussions with Taylor Wimpey and MSDC continue.

- Cuckfield Golf Club – more delayed enforcement actions and more retrospective applications – much the same state of affairs as last year.

We are grateful to both Pete Bradbury and our MP, Mims Davies, for coming out publicly against the Cuck-stye proposals.

## **Roads & Traffic Committees – Cllr John Dickie**

The Council is attempting to put in place a medium to long term management strategy for highways and transport; in recognition of residents' longstanding and ongoing concerns over a number of issues in this general area including road safety, traffic density, speed, congestion and parking. With the likelihood of increased traffic flows through the village resulting from the Burgess Hill Northern Arc development, and now the even more alarming possibility of 'Cuck-stye' coming to pass, the need for a strategic approach becomes ever more urgent.

The main objective is tangible improvement of the safety, convenience and comfort of Cuckfield residents; at the same time without significant detriment to businesses and the village economy, and ideally improving these essential aspects of a thriving community. Measures to control and reduce through traffic must not deter visitors, or seriously inconvenience residents. The trade-offs or compromises implicit in this objective will always be very challenging to achieve. Resistance to previous efforts and proposals by the Council has come from both outside the village, at District and County levels; and from within it, with residents often divided over certain proposals. Different parts of the village have differing priorities and perceptions, each requiring different (and probably compromise) solutions. Last year we asked residents for input on their concerns and possible solutions. The Council compiled the feedback we received and has attempted to prioritise the issues as objectively as possible. We divided the village into eleven distinct areas, with further sub-division of road stretches within each. Not surprisingly, a number of issues, e.g. speeding, were repeated over several areas and stretches.

The long list of distinct problems and concerns amounted to sixty-five items, each of which councillors scored between 1 (lowest) and 10 (highest), based on their own judgement and verbal feedback they had received from residents. The median scores were then ranked and issues with lower ranks removed from further consideration for now. The remaining twenty-two highest ranking issues, judged to be overall of highest importance across the village, fall into seven general categories and most of these will be no big surprise: speeding, congestion, pedestrian safety, cyclist safety; heavy goods vehicle traffic; vehicle safety; parking.

### ***Next steps***

1. We will present the results of our prioritisation exercise to residents at the Annual Parish Meeting with an opportunity for those attending to 'sense check' and comment on the priority given to specific issues, which could result in removal of one or more priority items, or raising the priority of ones earlier judged to be lower.
2. The finalised list will then be used as a basis for consultation between the Council and a highways consultant who we will work with on the issues and our proposed solutions (there may be others not yet considered), in the light of their relative feasibility.

Both cost and policy (district, county and national) limitations will affect feasibility, which may well leave apparently popular measures practically undeliverable in a reasonable timeframe.

However, we anticipate we would then be left with a final short list of issues and solutions that the Council has a very reasonable chance of successfully delivering for Cuckfield.

### Finance and General Purposes Committee – Sam Heynes (Clerk)

2021-22 has been an easier year financially after the recent challenges caused by Covid. Most of our regular hirers have returned and many one-off events have been able to take place meaning our income has been more stable this year, whilst expenditure largely remained unchanged. Key points of interest for 2021-22 are listed below:

- Roads & Traffic – commissioning of a consultant to establish traffic calming measures suitable for Cuckfield has been delayed to 2022-23 whilst further exploration of the key priorities of residents takes place.
- Finance & General Purposes – income was close to forecast, however expenditure was slightly lower due to staff vacancies and the continued delay of the Buttinghill land transfer.
- Environment – income was higher than forecast at the cemetery due in part to burials taking place that had previously been delayed due to Covid restrictions. Expenditure was close to forecast, although a major cost to remove trees suffering with Ash Dieback was incurred. Repairs to the Lychgate roof were covered by a grant received from the Kempe Trust.
- Queen’s Hall – income received was higher than the cautious forecast for the year due to Covid restrictions being lifted, and many postponed weddings finally being able to go ahead. Expenditure was broadly as forecast, however an increase for next year will be caused by higher fuel costs.
- Cuckfield Village Hall – again, similar to above, hall hire income exceeded forecast due to restrictions being lifted, and expenditure was lower than forecast due to slow progress with the proposed refurbishment works. These will be considered in 2022-23 instead.

Looking forwards to 2022-23, further investigation into traffic calming options for the village will be considered, together with continued development of the Angela Fox Nature Garden which is now open for use as per our licencing conditions. A new external toilet is planned for installation at the Queen’s Hall funded in part by S106 monies from MSDC, and a new parking area to the front of Cuckfield Village Hall will be costed in detail for consideration.

For more details of the plans for the remaining year of this Council’s term, please see the Business Plan.

	2021-22 Budget	Actual Net	Balance
<b>Roads &amp; Traffic</b>			
Income	£2,000	£1,648	-£351
Expenditure	£9,700	£6,153	£3,546
	2021-22 Budget	Actual Net	Balance
<b>Planning</b>			
Income	£0	£0	£0
Expenditure	£3,764	£3,764	£0
	2021-22 Budget	Actual Net	Balance
<b>Finance &amp; General Purposes</b>			



Income	£248,341	£247,166	-£1,175
Expenditure	£215,252	£197,248	£18,003
	<b>2021-22 Budget</b>	<b>Actual Net</b>	<b>Balance</b>
<b>Environment &amp; Wellbeing</b>			
Income	£68,800	£78,987	£10,187
Expenditure	£58,845	£55,308	£3,536
	<b>2021-22 Budget</b>	<b>Actual Net</b>	<b>Balance</b>
<b>Queen's Hall</b>			
Income	£26,000	£33,588	£7,588
Expenditure	£65,496	£65,450	£46
	<b>2021-22 Budget</b>	<b>Actual Net</b>	<b>Balance</b>
<b>Cuckfield Village Hall</b>			
Income	£18,800	£24,125	£5,325
Expenditure	£23,788	£18,272	£5,516
	<b>2021-22 Budget</b>	<b>Actual Net</b>	<b>Balance</b>
Total Income	£363,942	£385,516	£21,574
Total Expenditure	£376,848	£346,198	£30,650

<b>Reserve Movements</b>	<b>Current Value 2021-22</b>
Memorial Repairs	£4,000
Traffic Calming (London Lane)	£22,427
Grants	£2,15500
Horsefield Green Landscape & Pond	£24,416
Horsefield Green 10 Year Fund	£104,375
Allotment Deposits	£3,720
Council Elections	£714
CVH Refurbishment	£9,042
Planning Committee Reserves	£0
Cemetery Pathways	£0
South Street Railings	£0
Allotment Maintenance	£444
Stage Curtains	£0
CCTV	£0
Nature Garden	£590
Lychgates	£1,000
Legal Fees	£250
<b>Current Reserves Total</b>	<b>£173,134</b>

Fortunately, we secured the following grants over the past year which have been put to good use in supporting the community and the assets of the village:

<b>£5,000</b>	<b>Sussex Community Foundation</b> Winter welfare grant for the community, used to fund food hampers for those in need.
<b>£1,150</b>	<b>War Memorials Trust</b> Cleaning the War Memorial at the cemetery.
<b>£2,385</b>	<b>Sussex Lund</b> Providing environmental support around the village.
<b>£750</b>	<b>Independent State of Cuckfield</b> Fruit Orchard at Horsefield Green.
<b>£500</b>	<b>Cuckfield Society</b> Fruit Orchard at Horsefield Green.
<b>£923</b>	<b>Sussex Police &amp; Crime Commission</b> CCTV at Broad Street Toilets for crime prevention.
<b>£500</b>	<b>Baptist Church</b> Donation towards food hampers for those in need.
<b>£1,881</b>	<b>Kempe Trust</b> Grant awarded to cover essential repairs to Lychgate roof
<b>£4,790</b>	<b>S106 funds awarded by MSDC</b> Funding ongoing development of the Angela Fox Nature Garden
<b>£12,740</b>	<b>S106 funds awarded by MSDC</b> Funding ongoing development of the Angela Fox Nature Garden (funding agreed, payments pending)
<b>£3,500</b>	<b>National Lottery Community Grants</b> Requested funding towards the Platinum Jubilee celebrations (decision pending)