

ET³SIANGREEN

The Arun - Flat Roof



The Arun - Flat Roof

data sheet



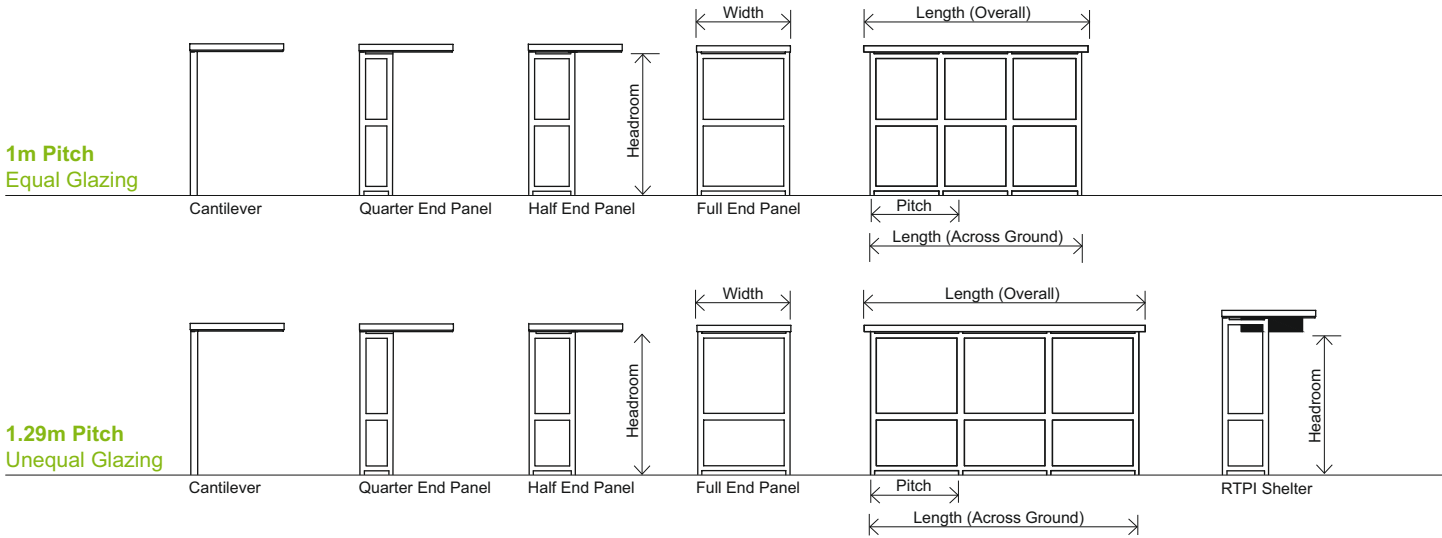
The flat roof Arun incorporates many of the features found throughout the Shelter Solutions ranges, including a safety mid-rail, making it an attractive, high quality vandal resistant shelter with a very clean and contemporary design.

Configurations for the bus shelter include both cantilever and enclosed designs for improved protection from the elements.

The flat roof Arun is designed around a steel frame, which can also be manufactured from stainless steel for a more premium look. The steel sandwich roof is edged with an aluminium extrusion for added strength. The glazing system utilised is secure and unobtrusive, yet easily accessible for maintenance. The glazing system can accept a variety of materials from toughened glass to solid painted galvanised panels.

The standard flat roof Arun bus shelter is available in 1290mm pitch bays, with a roof width of 1375mm.

Other sizes are available on request.



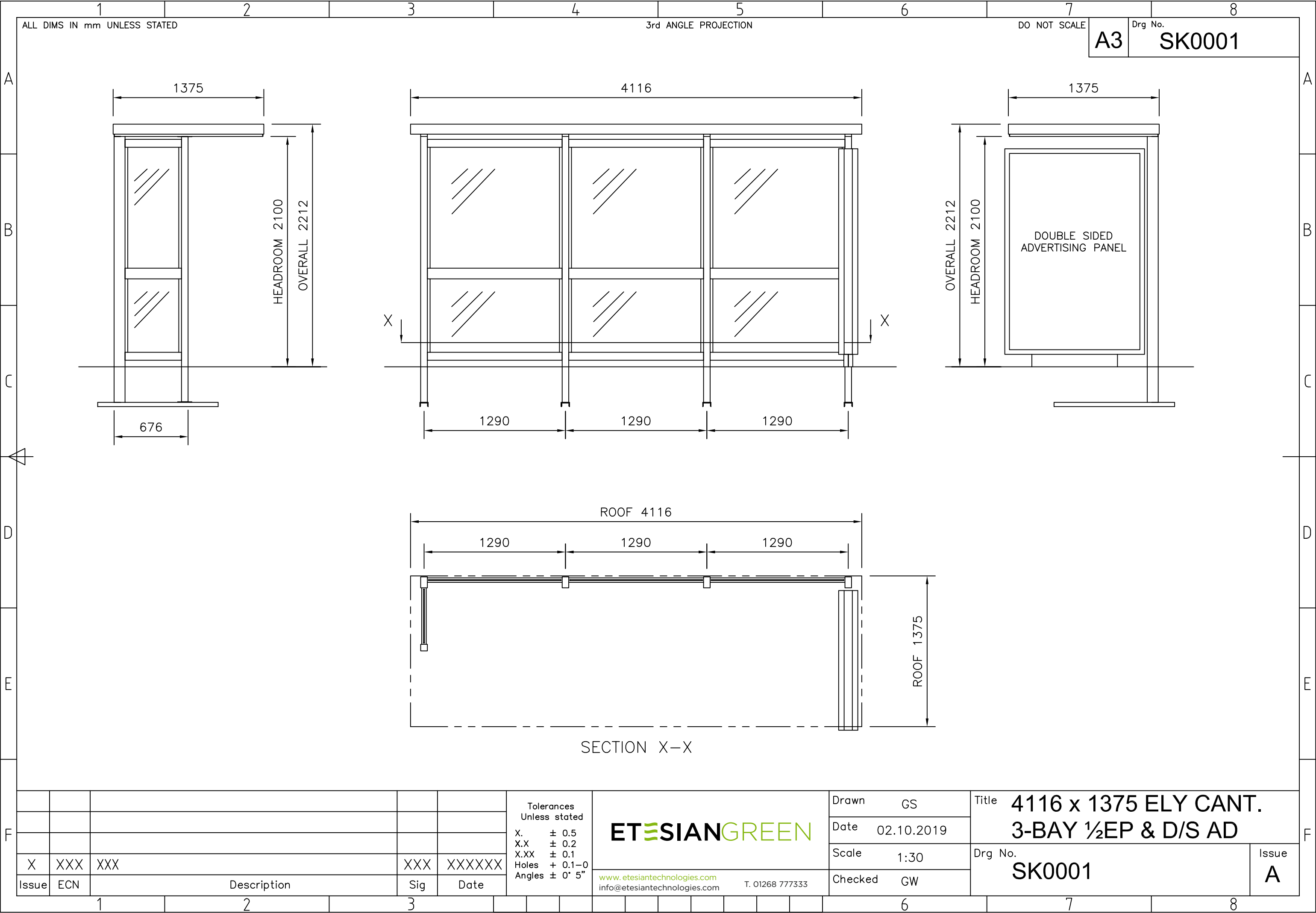
Cantilever	Enclosed	Width	Pitch	Length				Cantilever End Panels	Headroom
				Across Ground		Overall			
				2 Bay	3 Bay	2 Bay	3 Bay		
•	•	1375mm	1000mm	2060mm	3060mm	2250mm	3250mm	QEP HEP FEP	2100mm
			1290mm	2640mm	3930mm	2830mm	4120mm		

SPECIFICATION

Frame:	Steel - zinc protected square section (60mm square)
Finish:	Powder coated to any standard RAL colour
Roof Shape:	Flat
Standard Headroom:	2100mm
Glazing System:	Glazing System: Extruded aluminium with mid rail
Side & End Glazing:	6mm UV protected clear polycarbonate, or 8mm toughened glass, or Solid panels (powder coated finish),or Mesh panels (powder coated finish)
Roof:	Steel sandwich roof with aluminium surround
Ground Fixing:	Ground Fixing: Dig in or Bolt down
Fixings:	Stainless steel
Configurations:	Enclosed Cantilever No end panel NEP Quarter end panel QEP Half end panel HEP Full end panel FEP

OPTIONS

Seating:	Aluminium perch (with or without handles) GRP pad (with or without handles) Wooden perch
Lighting:	LED mains
RTPI:	Fully compatible
Timetable Cases:	A4, AA4, AAA4 or DRU (Double Royal)
Bus Stop Flag Brackets:	Fully compatible
Signage:	Vinyl or screen printed graphics



ALL DIMS IN mm UNLESS STATED

3rd ANGLE PROJECTION

DO NOT SCALE

A3 Drg No. SK0001

A

B

C

D

E

F

A

B

C

D

E

F

1375

4116

1375

HEADROOM 2100

OVERALL 2212

OVERALL 2212

HEADROOM 2100

DOUBLE SIDED
ADVERTISING PANEL

676

1290

1290

1290

ROOF 4116

1290

1290

1290

ROOF 1375

SECTION X-X

X	XXX	XXX	XXX	XXXXXX
Issue	ECN	Description	Sig	Date

Tolerances
Unless stated
X. ± 0.5
X.X ± 0.2
X.XX ± 0.1
Holes + 0.1-0
Angles ± 0° 5"

ETESIAN GREEN

www.etesianttechnologies.com
info@etesianttechnologies.com T. 01268 777333

Drawn	GS
Date	02.10.2019
Scale	1:30
Checked	GW

Title 4116 x 1375 ELY CANT. 3-BAY 1/2EP & D/S AD	
Drg No. SK0001	Issue A



					<p>Tolerances Unless stated</p> <p>ETESIAN GREEN</p> <p>X. ± 0.5 X.X ± 0.2 X.XX ± 0.1 Holes + 0.1-0 Angles ± 0' 5"</p> <p>www.etesiantechologies.com info@etesiantechologies.com</p> <p>T. 01268 777333</p>	<p>Drawn GS</p> <p>Date 26-01-2020</p> <p>Scale 1:30</p> <p>Checked GW</p>	<p>Title 1.375m (W) x 1.29m (P) ARUN FLAT ROOF</p> <p>Drg No. SK2905 PAGE 1 of 2</p>	<p>Issue</p> <p>1</p>
X	XXX	XXX		XXX		XXXXXX		
Issue	ECN		Description	Sig	Date			

1.375m(W) x 1.29m(P) CANTILEVER FLAT ROOF ARUN																																			
SHELTER TYPE	SHELTER NAME	RTI	HEADROOM	OVERALL HEIGHT	ROOF LENGTH												LENGTH ACROSS GROUND																		
					2 BAY				3 BAY				4 BAY				2 BAY		3 BAY		4 BAY														
1	STANDARD HEIGHT	NO	2100mm	2212mm	2830mm				4116mm				5410mm				2640mm		3930mm		5220mm														
2	RTI HEIGHT	YES	2100mm	2510mm																															
3	EXTENDED RTI HEIGHT	YES	2300mm	2710mm																															