

A long-exposure photograph of a road at night, showing light trails from vehicles. The trails are primarily blue and white on the left side, and orange and red on the right side, curving towards the right. The background is dark.

# Traffic Calming in Cuckfield, West Sussex

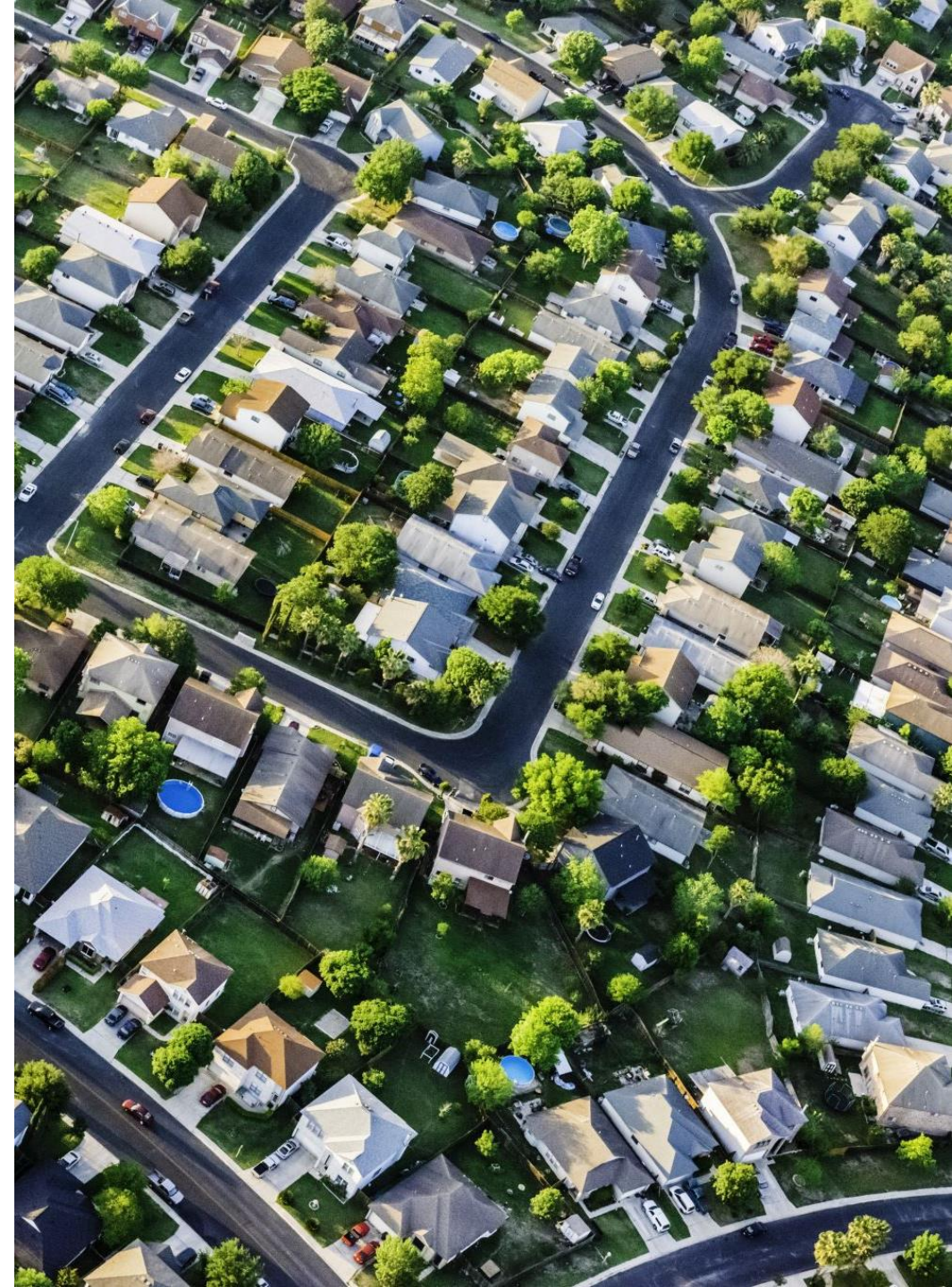
Community Governance: Community Research Assignment

Sam Heynes, Parish Clerk, Cuckfield

# Introduction

- Cuckfield (population 3,767<sup>1</sup>) is a village in West Sussex, South-East England
- Community Research: Traffic Calming & 20mph Zones
- West Sussex County Council's revised Speed Limit Policy published in March 2023
  - “The 2022 changes to the Highway Code introduced a “hierarchy of road users” which places those road users most at risk in the event of a collision at the top of the hierarchy and placed greater responsibility on those who pose the greatest risk to others (generally motorised traffic) to use the highway safely. The most vulnerable road users (VRUs) are pedestrians, cyclists and equestrians and exist in both urban and rural settings.” (2023:3 WSCC)

<sup>1</sup> Population of Cuckfield  
[https://www.citypopulation.de/en/uk/southeastengland/admin/mid\\_sussex/E04009984\\_\\_cuckfield/](https://www.citypopulation.de/en/uk/southeastengland/admin/mid_sussex/E04009984__cuckfield/)



# Research Aim & Objectives

- To identify traffic calming priorities for Cuckfield which would be supported by residents, with a view to presenting a case to West Sussex County Council for changes in line with their new Speed Limit Policy.
  - To identify roads which would benefit from a reduction in speed limit to 20mph.
  - To identify roads where a reduction in speed limit may reduce the occurrence of road traffic accidents.
  - To identify other traffic calming mechanisms that may be supported by the community either separately or alongside speed limit reductions.
  - To improve community engagement and participation in Cuckfield Parish Council decisions.
  - To submit a proposal to West Sussex County Council for traffic calming improvements with demonstrable support of the community.

# Survey Methods



## Questionnaire: June 2023

Shared online on Council's Facebook page and website

Publicised in Parish Council newsletter

Attended local market and local community meeting in person



## Focus Groups: July 2023

Selected from questionnaire responses

Multiple dates offered

Online and face to face



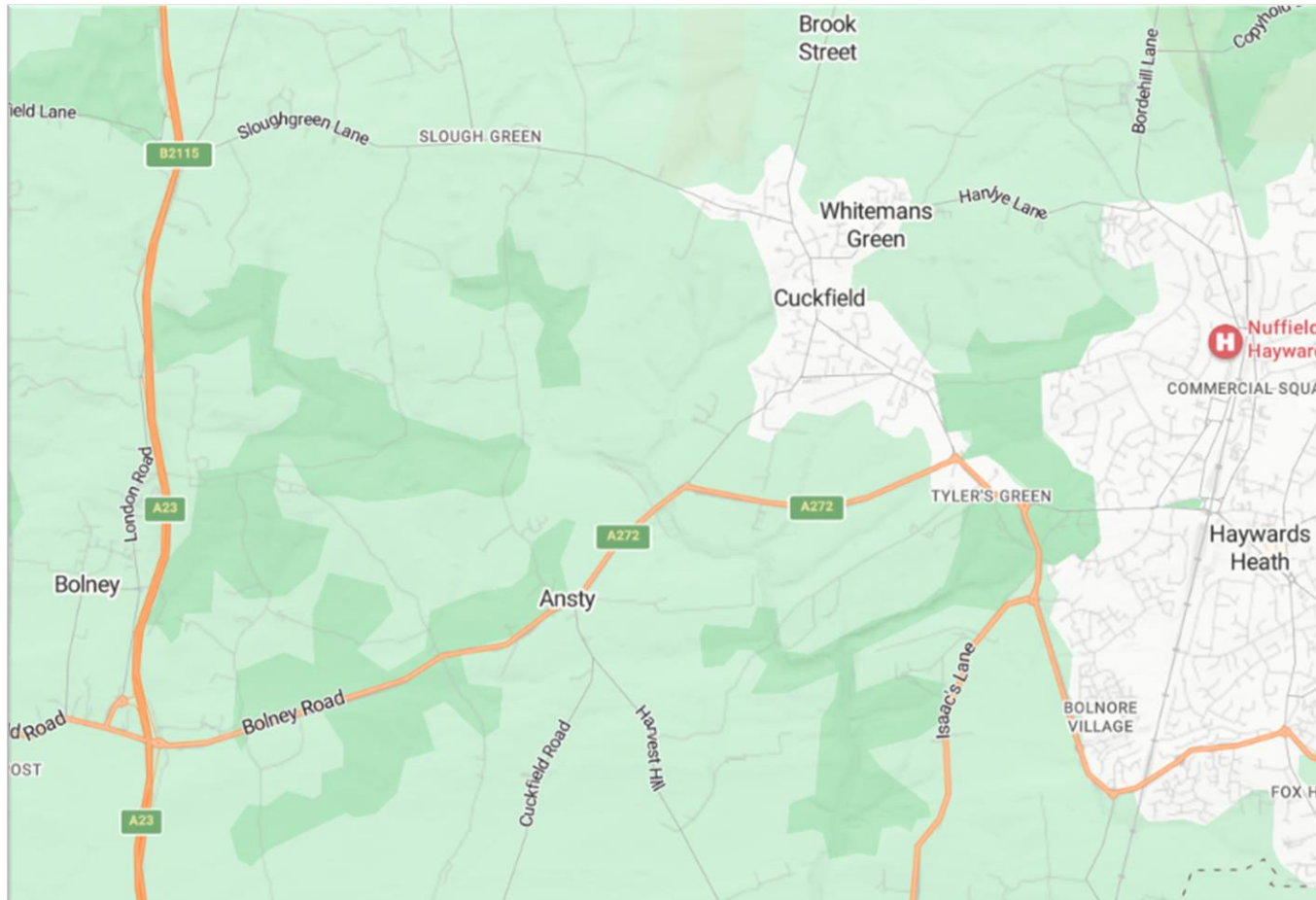
# Survey Delivery

- Ethical considerations explained with consent obtained
- Web based questionnaire
- Newsletter article with links
- Information Stand at local market
- Attendance at local residents' meeting
- Focus Groups
  - Volunteers provided their details via the survey as an option
  - Confidentiality emphasised
  - Possibly skewed sample due to bias/self-interest?

# Community Engagement

- Majority of respondents local residents or visitors to Cuckfield
- Familiarity with local infrastructure
- Some visitors from further afield met at local market
- Councillors also responded

<b>TOTAL RESIDENTS</b>	<b>3,767</b>	<b>PERCENTAGE OF TOTAL RESIDENTS</b>
Respondents	285	7.566%
Focus Group Volunteers	48	1.274%
Focus Group Participants	14	0.372%



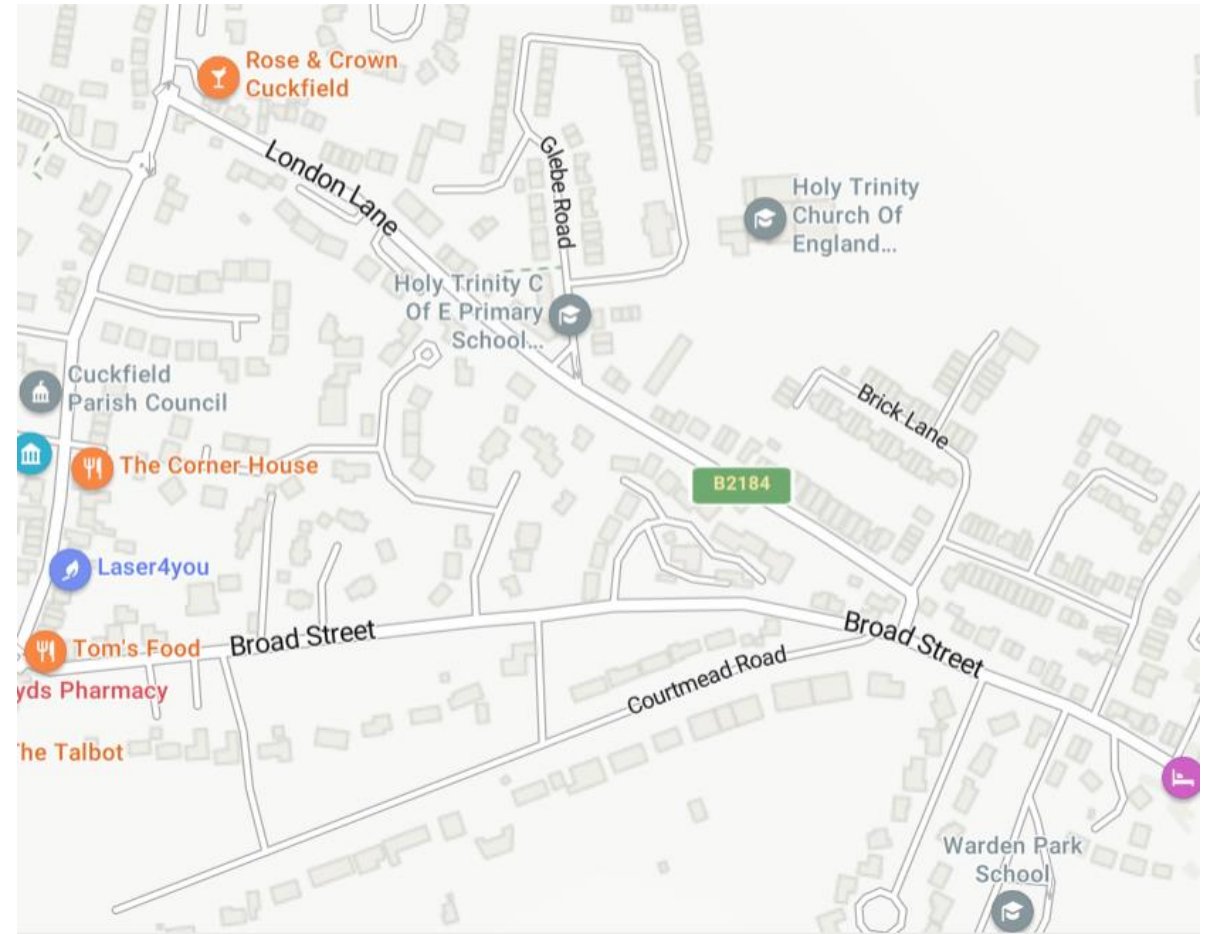
## Background

- A272 bypass not fully utilised
- Cutting through Cuckfield quicker?
- Make Cuckfield unattractive to commuters and HGV traffic
- 20mph zones slow traffic?
- Previously trialled a central one-way system during COVID

# Schools

---

- Preschool, Primary & Secondary Schools on major access roads through village centre
- Heavy pedestrian and vehicle traffic at school drop off and pick up times
- Improve safety for pedestrians
- Reduce speeds and volume of traffic







London Lane



# South Street

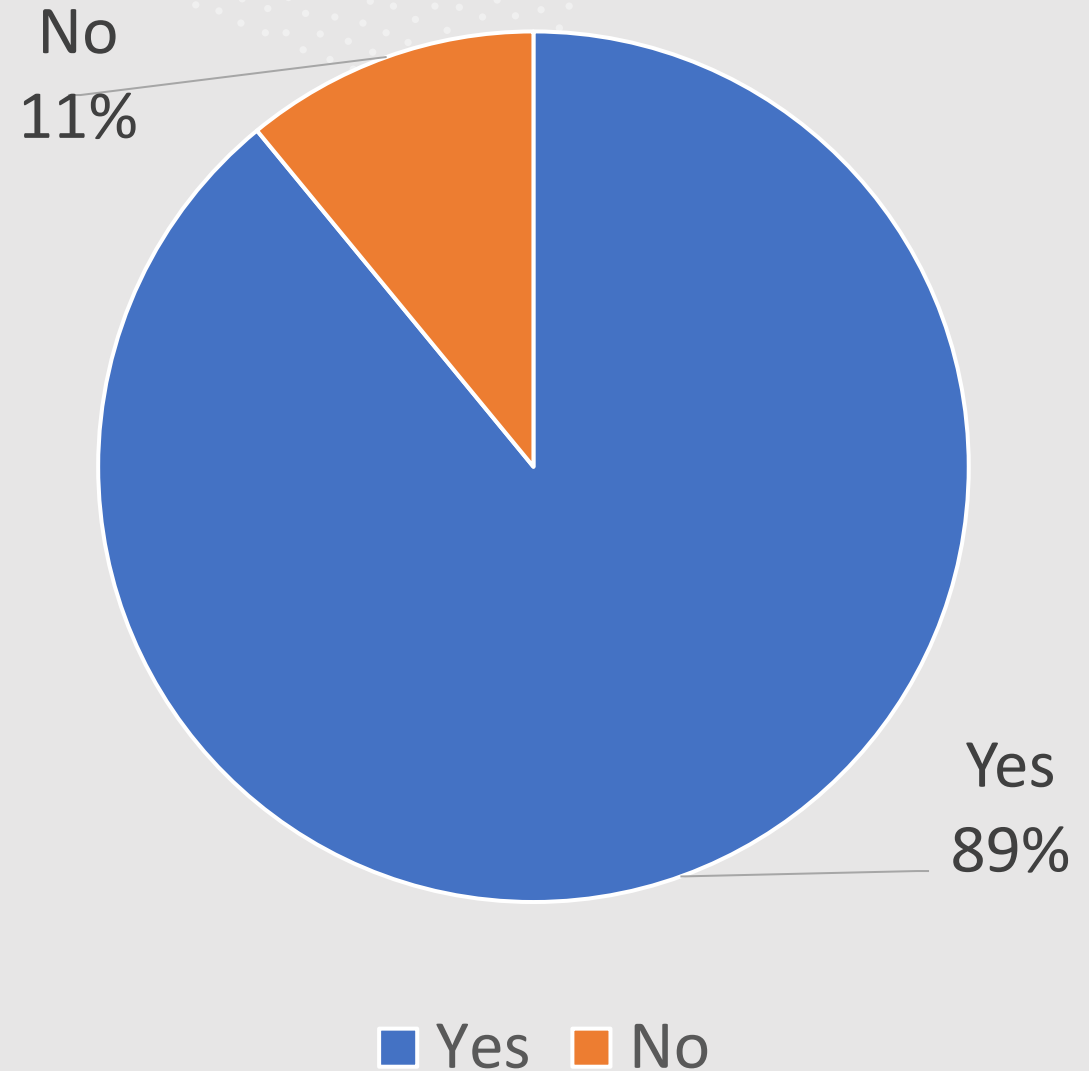




High Street

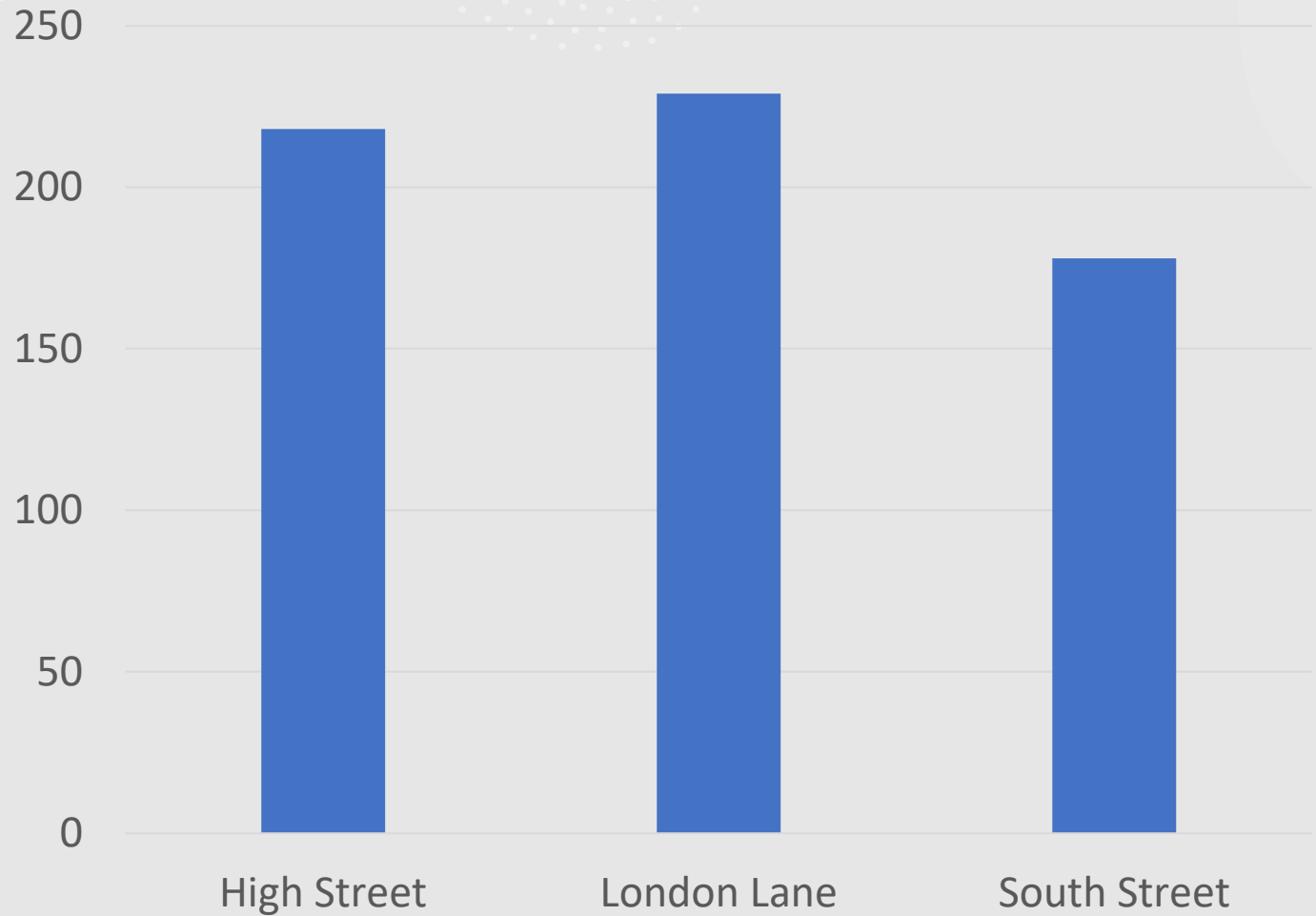
# Survey Results

Do you believe there is a need for more traffic calming measures within Cuckfield?



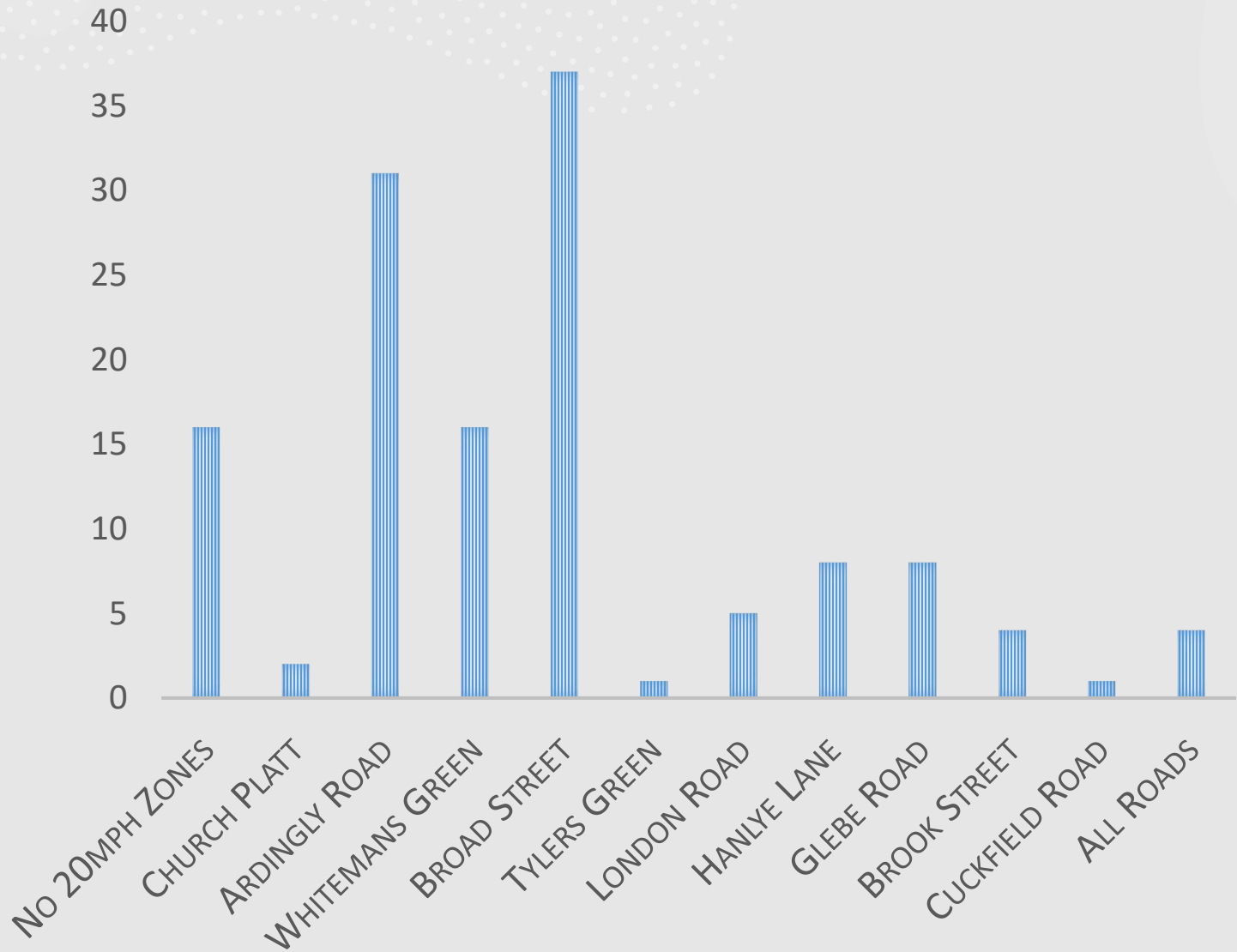
# Survey Results

Would you support the introduction of 20mph limits within Cuckfield on:



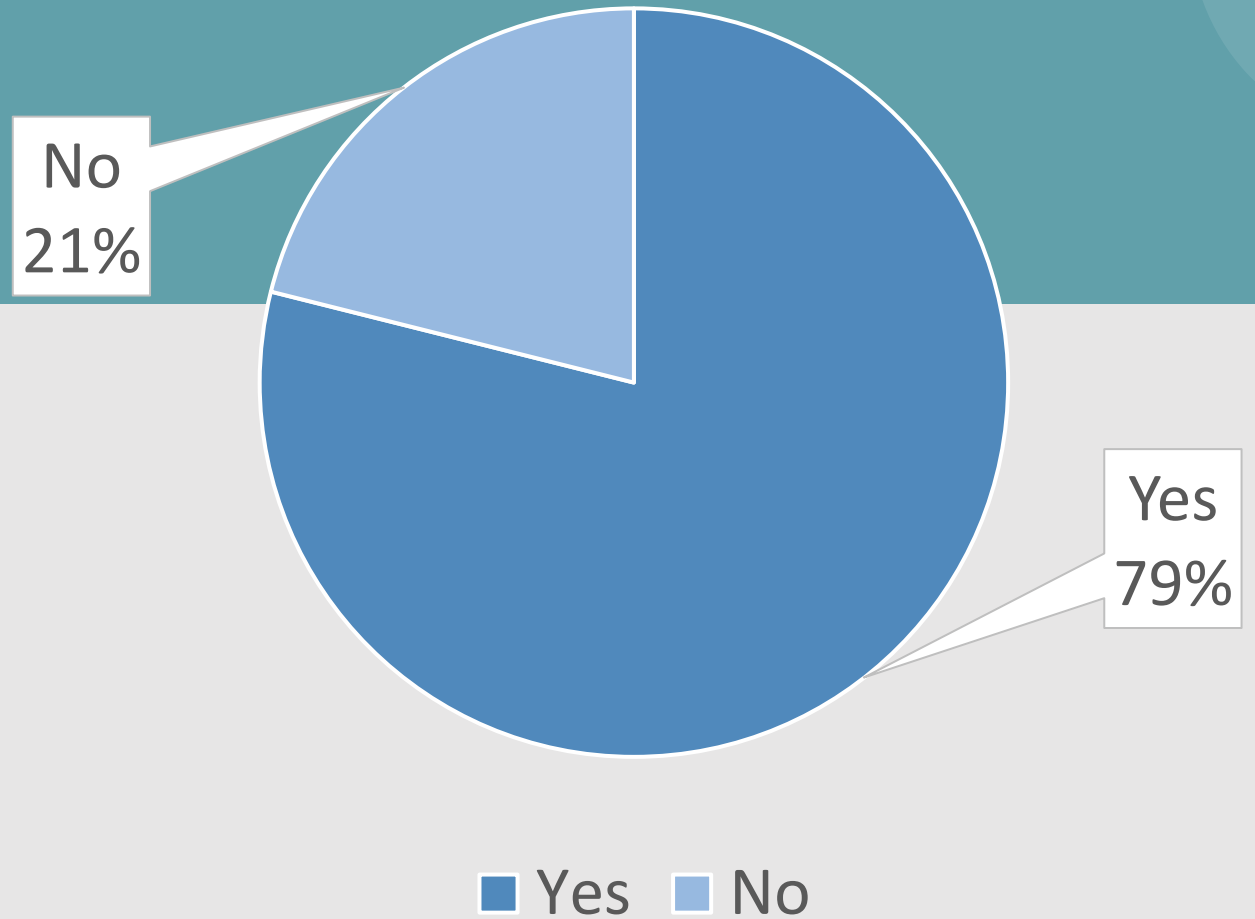
# Survey Results

## RESPONDENTS



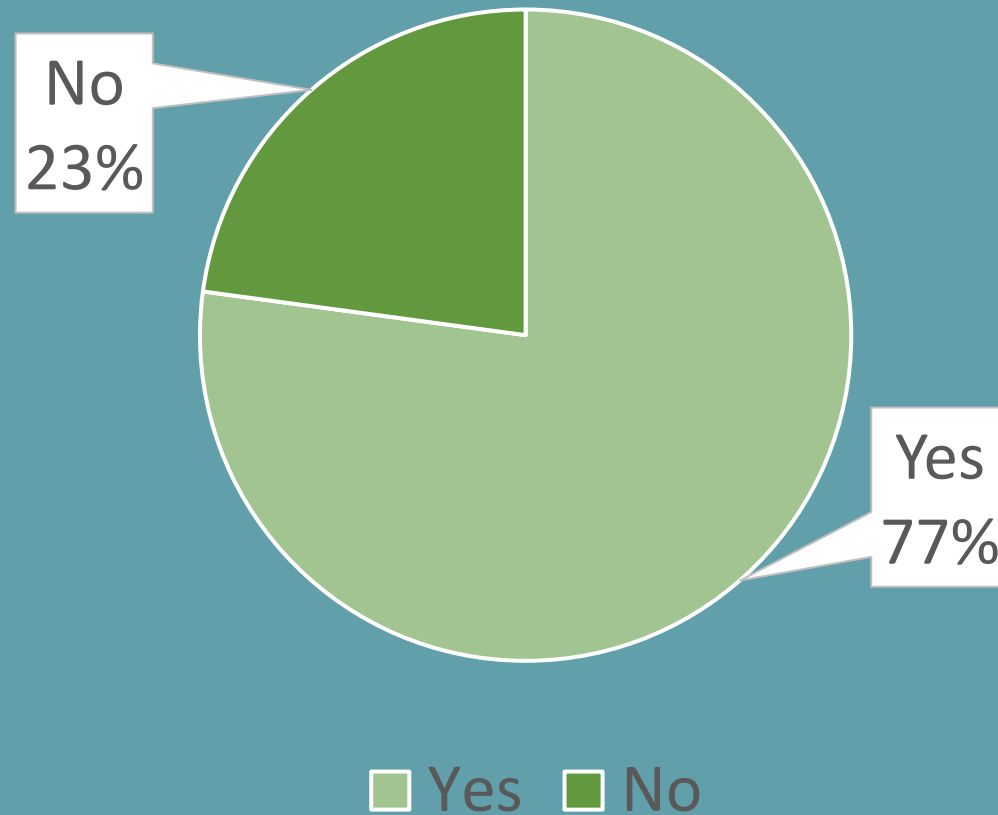
Would you support reducing the speed on Broad Street to 30mph all the way to the Cuckfield bypass roundabout?

# Survey Results



# Survey Results

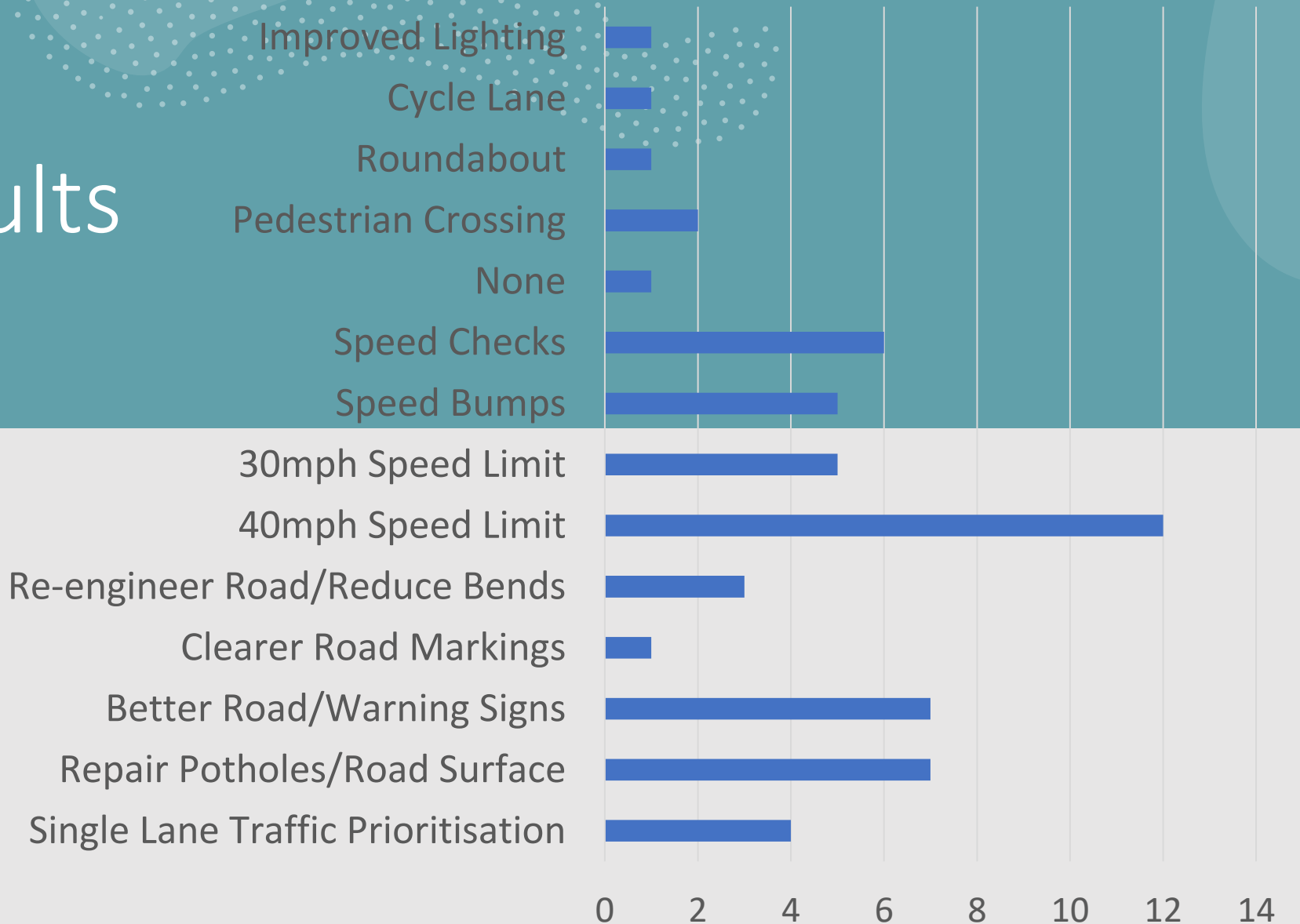
Does Hanlye Lane need additional traffic calming measures to try and reduce accidents?





# Traffic Calming on Hanlye Lane

## Survey Results



# Focus Group Observations

- 20mph zone the entire village/reduce speed limits
- No Drive Zone around schools during drop off/pick up times
- Review on road parking which causes blind spots – double yellow lines?
- Scarecrows wearing Hi-Viz Jackets around village
- Increased housing has equalled more traffic
- Improved public transport especially during rush hours
- More speed checks with consequences for speeding
- Average speed check areas, like motorways?
- Cycle Paths



# Recommendations

- Traffic calming measures received support
- 20mph zones well received
- Next steps?
  - Contact Local County Councillor to discuss support for 20mph zone in Cuckfield
  - Liaise with WSCC to establish what is required to implement 20mph zones
  - Go back to public consultation with a specific proposal for traffic calming and 20mph zones